



NOVEMBER 8, 2017

CHS HSA GENERAL MEETING

11-8-2017 Central Home & School Association General Meeting Agenda

1. Welcome (5)
2. President's School Update (20)
3. HSA Plan (10)
 - Accomplished 2016-2017 School Year
 - Key Goals: 2017-2018 School Year
4. HSA Election: 280 Rep (15)
5. Meet our 279 Rep:
Keir Grey, voted in May 2017 (5)
6. HSA Fundraising Update (10)
7. Class Rep Updates (15)
8. Upcoming School Events (5)
9. Close (5)

Central High School Update

President Timothy McKenna



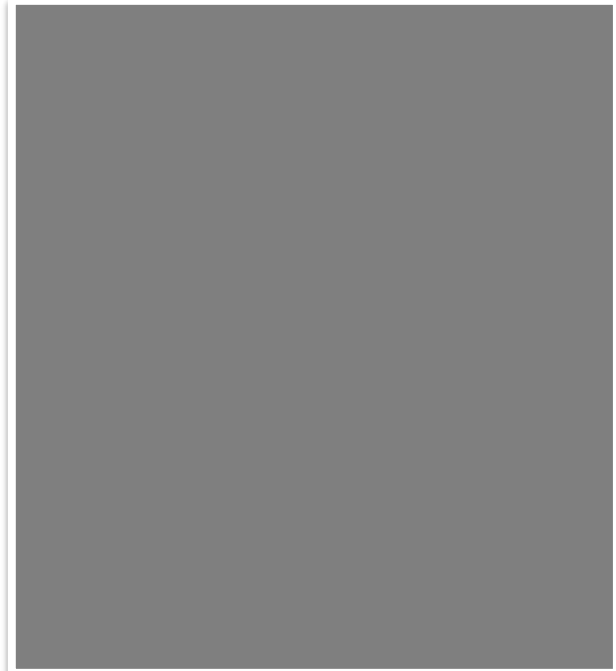
Central High School

PERFORMING ARTS CENTER

Schematic Design Presentation

October 4, 2017

MGA PARTNERS Architects



WELCOME

“I’m excited for this new building because it will give the future students of Central High School the chance to feel the same joy that I have felt while being a part of the arts program. Hopefully in the future I’ll be given the chance to come back to Central and teach theater after studying playwriting and music composition in college.”

Dylan Lewis

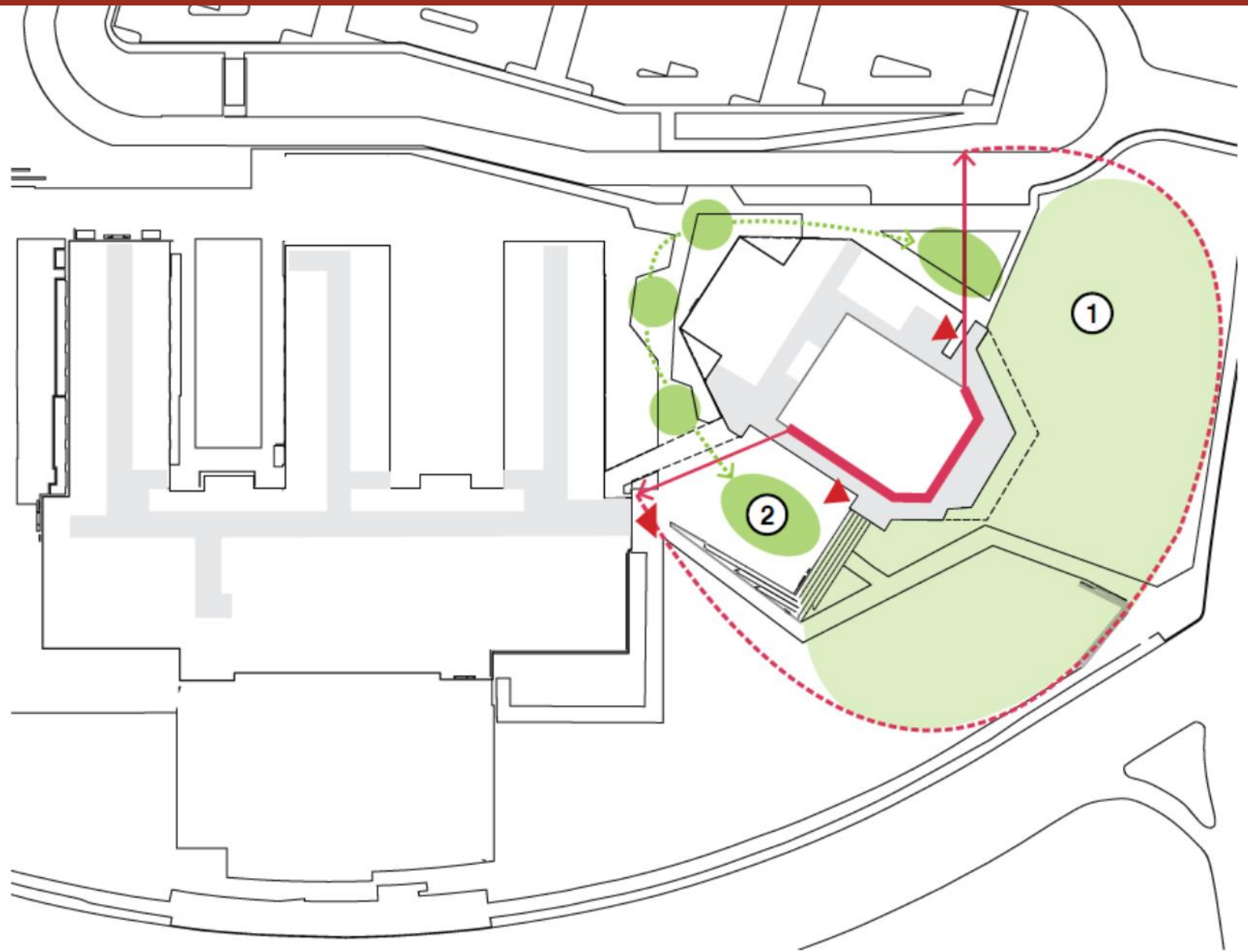


“Central is not a performing arts high school, but that’s because we’re something better. In the Arts Department, we know what it means to work hard in many aspects of our life, specifically academics, while creating phenomenal performances. It’s safe to say that we have outgrown the close confines of small spaces devoted to the Arts in the Central building. This performing arts center will provide us with new and exciting experiences to flourish.”

Grace Del Vecchio



SHAPING THE CAMPUS



- ① Views outward to the lawn and plazas
- ② String of plazas and student gathering spaces

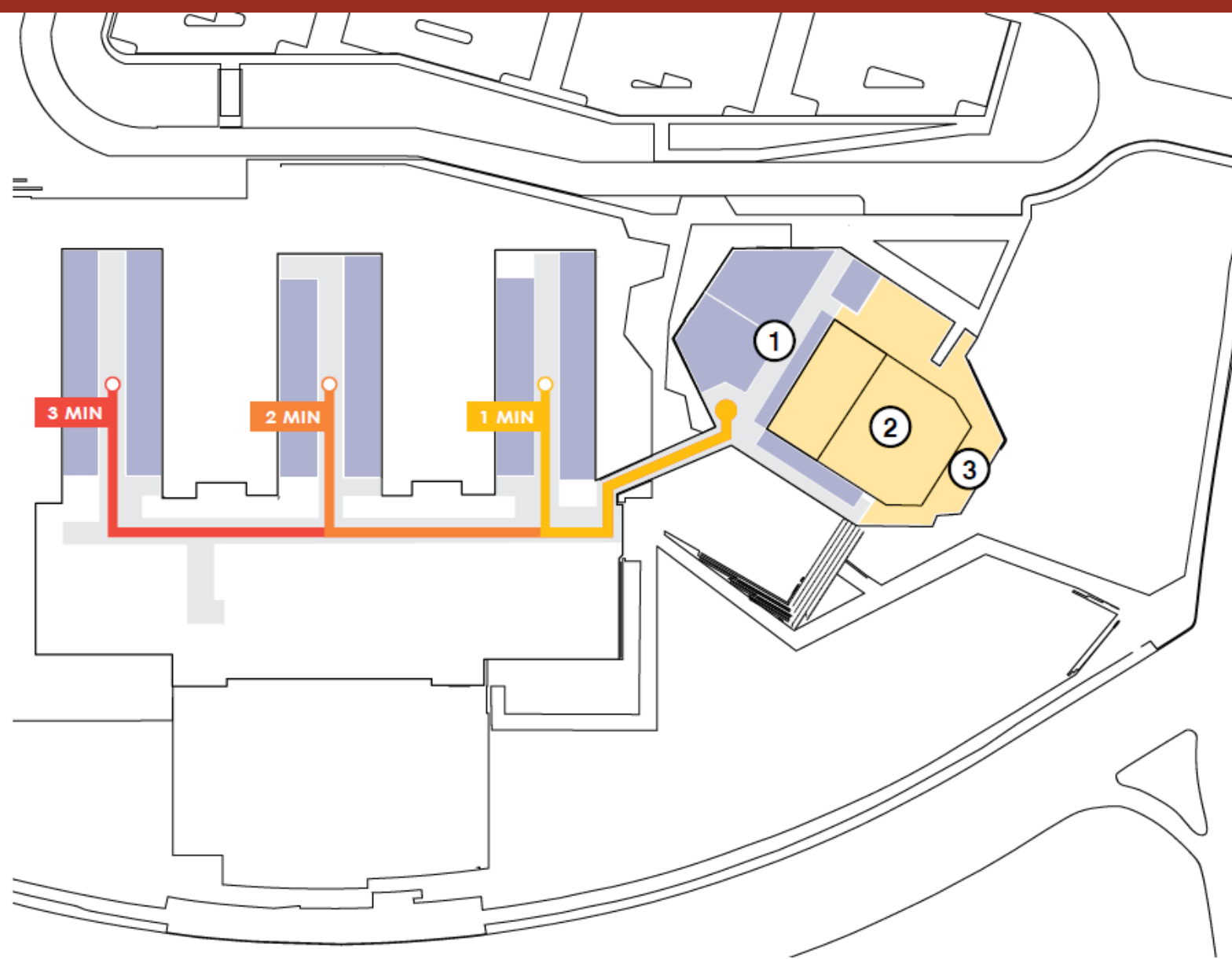
WELCOMING AT ALL SIDES



PRESENCE OF THE ARTS | View from Olney/Ogontz Intersection



PRESENCE OF THE ARTS | View from New Entry Drive



- ① 2nd Floor dedicated to rehearsals and academics
- ② Ground Floor dedicated to performance
- ③ Public lobby seperable from student spaces

PROXIMITY OF NEW PROGRAM SPACES



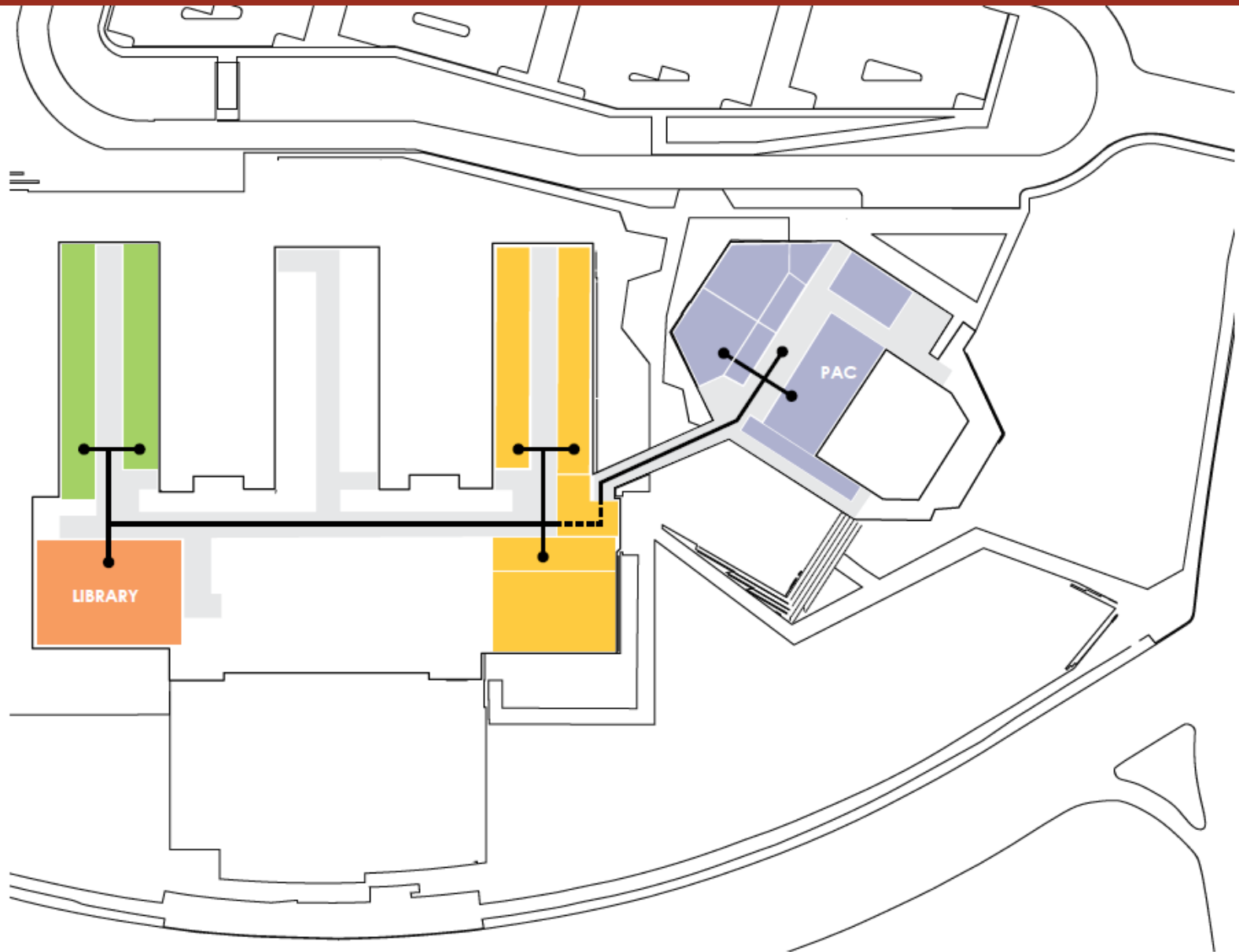
ENTERING THE LOBBY



ENTERING THE CAMPUS



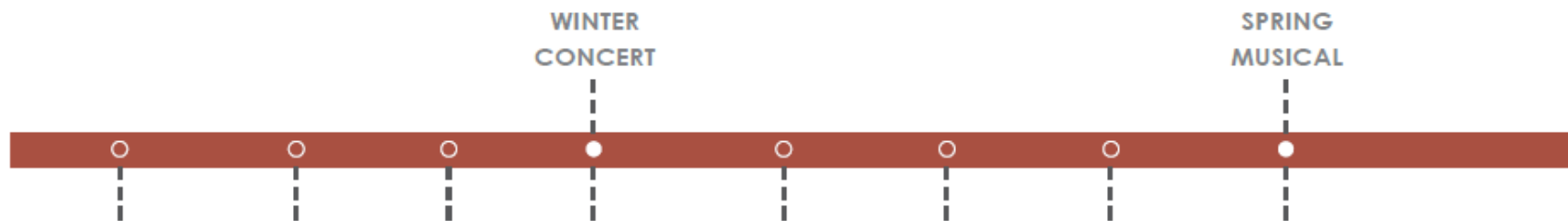
SHARING A PLAZA ENTRANCE



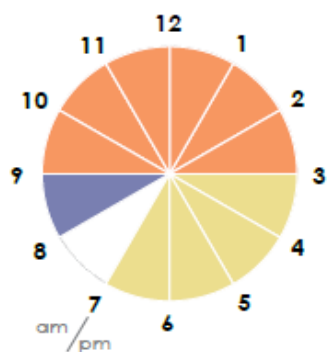
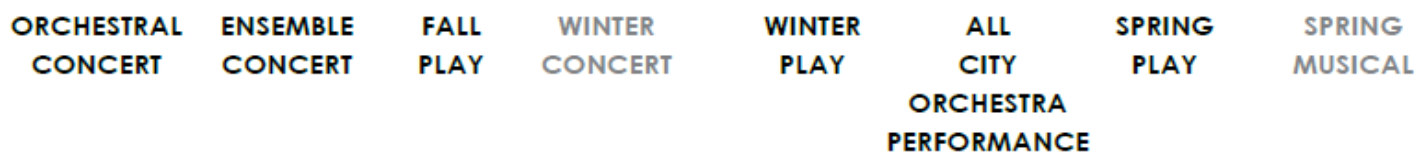
- Arts Hub
- Academic Hub
- Student Hub
- STEM Hub

ADVANCING THE MASTERPLAN

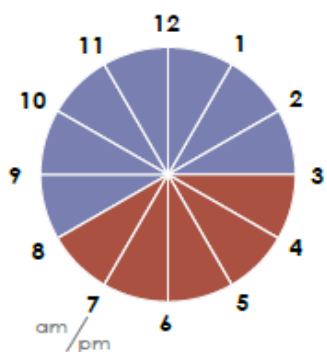
CURRENT PERFORMANCES:



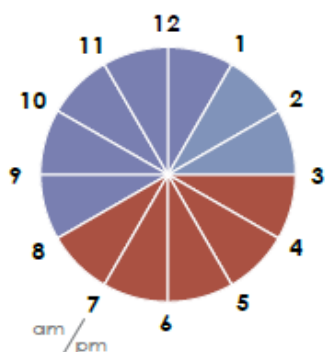
FUTURE PERFORMANCES:



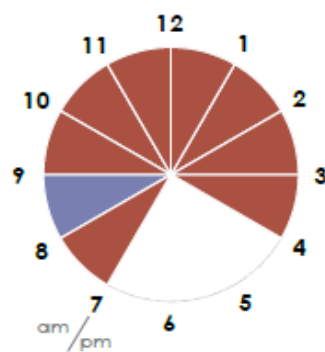
LOBBY



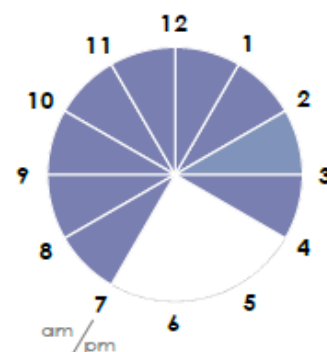
PERFORMANCE HALL



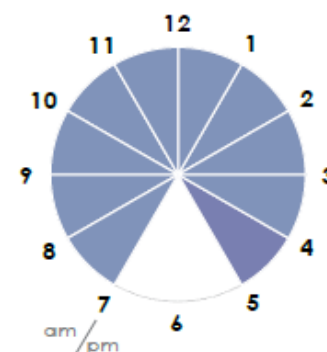
CHORAL ROOM



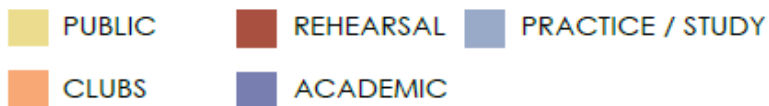
INSTRUMENTAL ROOM



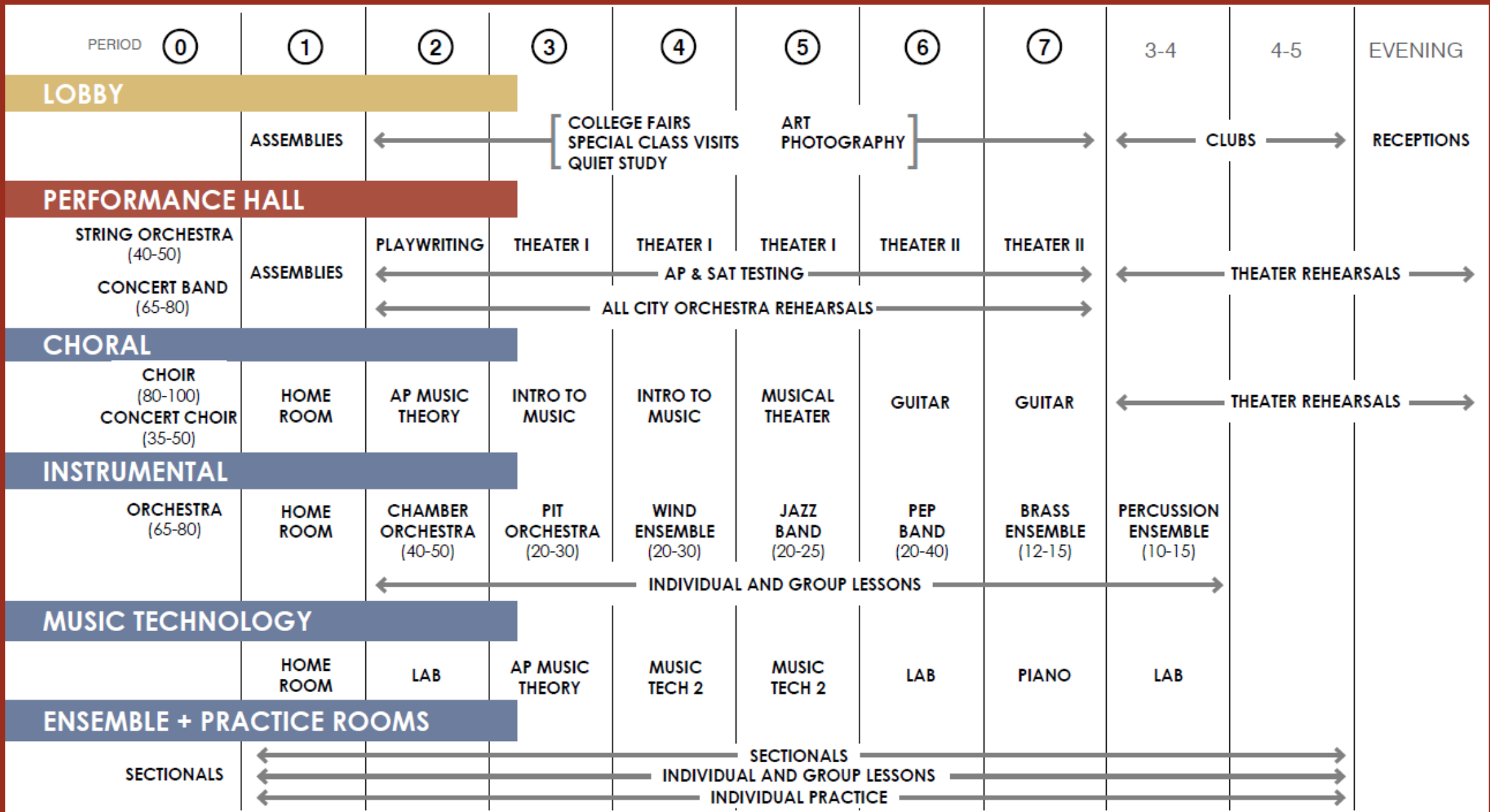
MUSIC TECH. CLASSROOM



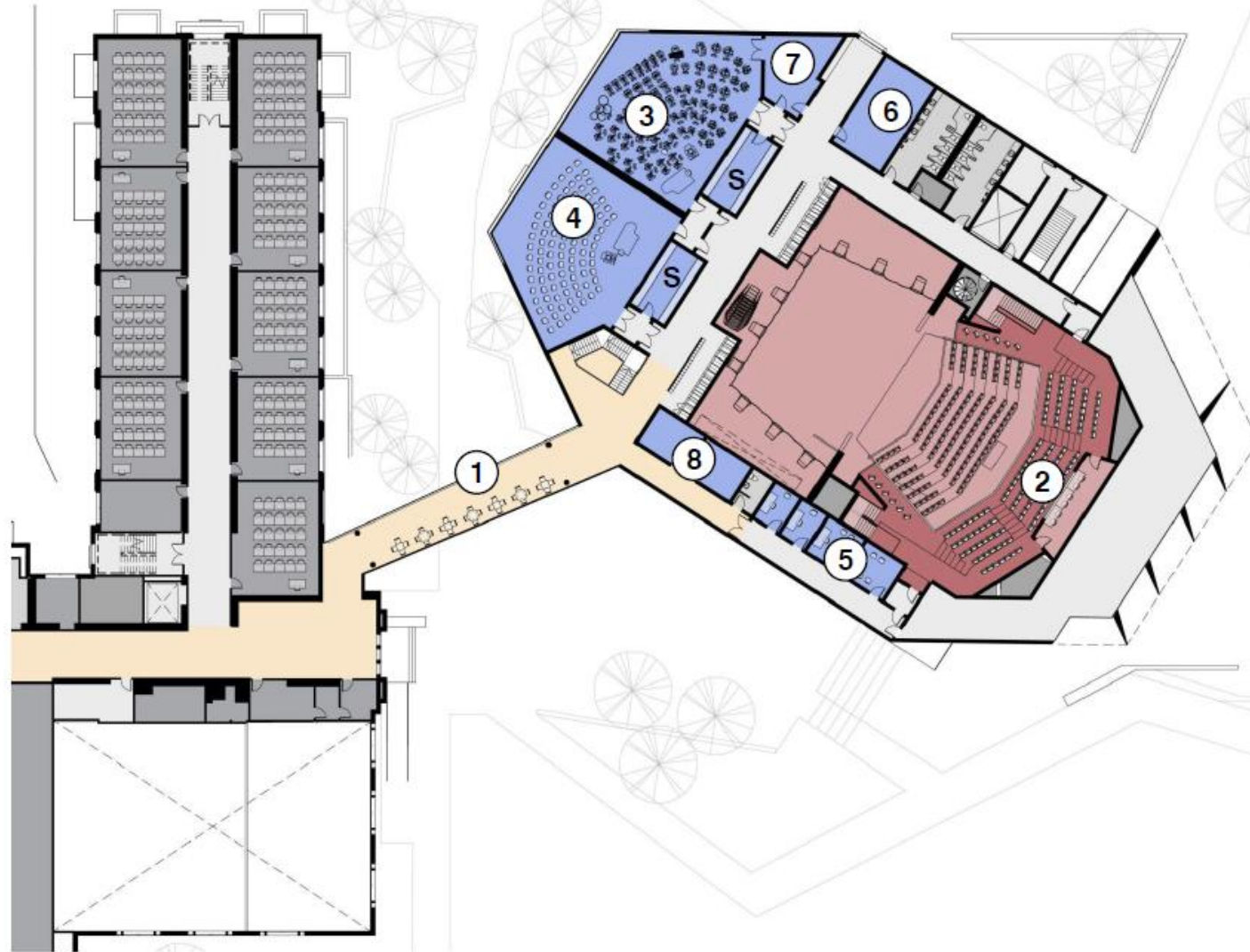
PERCUSSION/ ENSEMBLE/ PRACTICE ROOMS



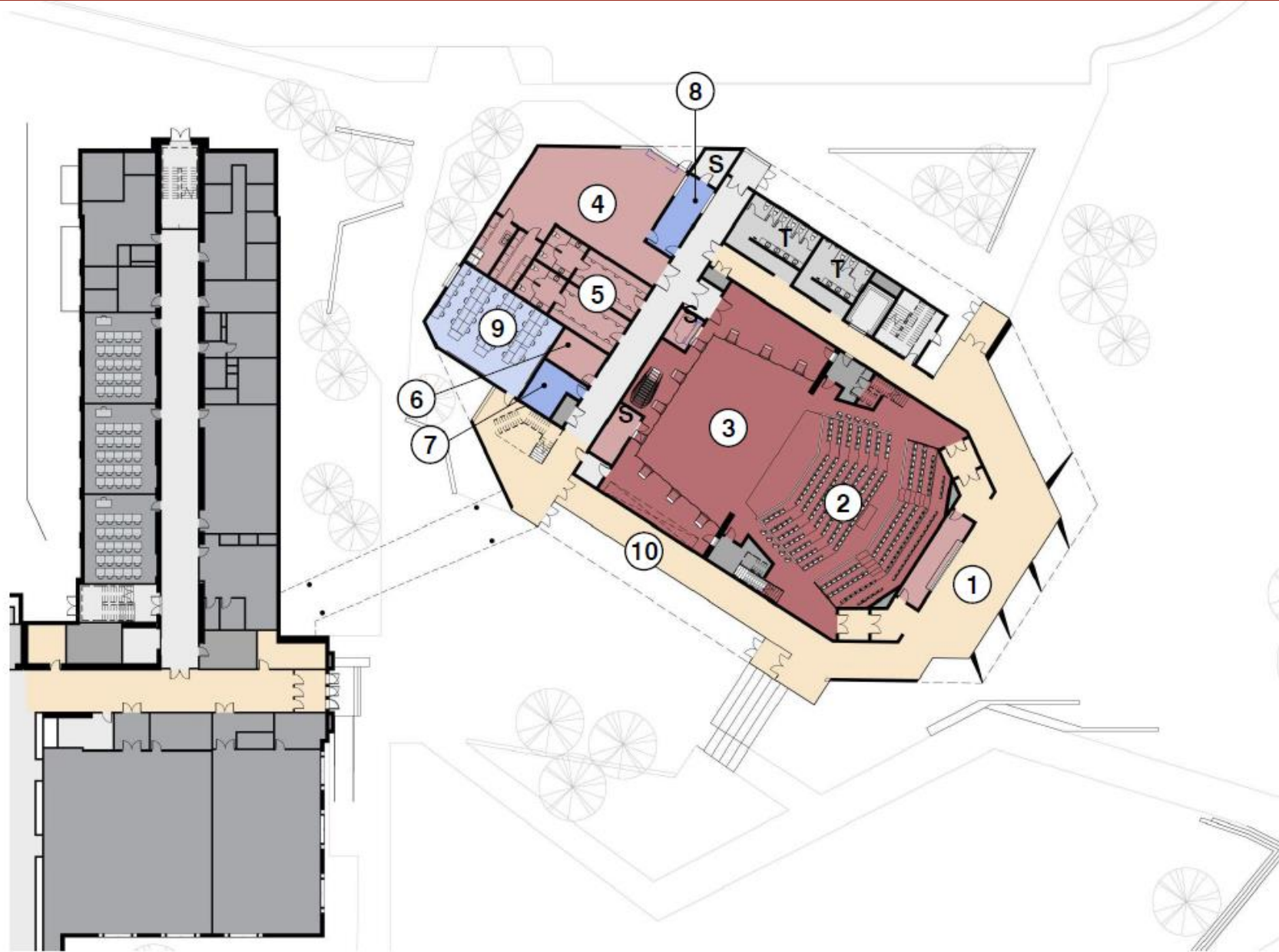
GEARING UP FOR THE PAC



GEARING UP FOR THE PAC



- ① COMMONS BRIDGE
- ② BALCONY
- ③ INSTRUMENTAL REHEARSAL
- ④ CHORAL REHEARSAL
- ⑤ PRACTICE ROOMS
- ⑥ ENSEMBLE PRACTICE
- ⑦ PERCUSSION
- ⑧ MUSIC OFFICES
- S STORAGE
- T STUDENT TOILETS



- ① LOBBY
- ② HOUSE
- ③ STAGE
- ④ SCENE SHOP
- ⑤ DRESSING ROOMS
- ⑥ COSTUME SHOP
- ⑦ PRIVATE DRESSING
- ⑧ STAGE OFFICE
- ⑨ MUSIC TECHNOLOGY
- ⑩ GALLERY
- S STORAGE
- T FACULTY / ADULT TOILETS

LEVEL 1



SPACE FOR PERFORMANCE

2016-2017 Accomplishments

- PowerPoint visuals prepared for all meetings
- Created online HSA membership form
- Tripled listserv and HSA membership
- Most successful auction: fun and \$\$\$
- Formed and institutionalized Environment Team with high parent and student volunteer turnout rates and full community service hours
- Clear understanding of Development Director role
- Well-organized, role-defined Frosh Night, Frosh Orientation, and B-to-S Night via online sign ups
- Started dialogue re: homework and testing
- Established presence (voice) on Listserv
- Established consistent teacher liaison

2017-2018 Key Goals

- ✓ Establish HSA site as one-stop-shop for key and current info
- ✓ Establish annual financial plan and monthly statements based on school year calendar (August 1, 2017 – July 31, 2018)
- ✓ Monitoring listserv and assist with school communications
 - Proper preparation, distribution, and archiving of essential Central HSA and Philadelphia Home & School Council information
 - Further grow communications: parent/guardian list serve: email from President McKenna
 - Create key-volunteer/Alum/Board emeritus email listserv – maintaining a connection to Central
 - Grow volunteerism via committees
 - Deploy \$13K from Central Live to bathrooms
 - Further fund: Bathrooms, whiteboards, AC and campus beautification
 - Increase coordination with Alum Association - establish an Alum Liaison
 - Contribute ideas re: practices to promote mental health and celebrate diversity

280 Class Rep Election

Nominees *(presented alphabetically)*

- Andrea Layden
- Vanessa McCloskey
- Dr. Angela S. McNeil
- Rashida Merazi
- Lisa Ripper

FUNDRAISING FOR CENTRAL

Co-VPs of Fundraising
Tani Bertolino
Carmen Hayman

Share your experience & ideas
with us:

fundraising@centralhsa.org

Caring for Central Campaign

Help us reach our goal of **\$10,000** for our annual Caring for Central Campaign. EVERY dollar raised goes directly back into the school.

- Donate online at www.centralhsa.org
 - One-time donation
 - Monthly subscription (can be stopped at anytime)
 - Check with your employer for gift matching programs
- Caring for Central Campaign Supported Last Year:
 - Campus Environment Team School Clean-ups
 - Music and Theater Department Productions
 - Physical plant improvements
 - School planners for all students
 - Staff requests to support trips and supplies
 - List Serve Updates, Frosh night, Frosh Orientation Days, Frosh Tea Club Fair, International Day, Teacher Appreciation, Graduation Awards and more



Thank you to the Siegel
Family for their generosity!

FARE RESTAURANT

Sunday, Nov 12th to Saturday, Nov 18th

2028 Fairmount Ave., Philadelphia, PA 19130

Mon-Thurs. 4pm-10pm,

Fri-Sun 9am-3pm & 4pm-10pm

***Call to make a reservation or book on
Open Table – Must mention **CENTRAL*****

November – Central Restaurant Week

Sunday, November 12th thru Saturday, November 18th

More information available at www.centralhsa.org



Trolley Car Diner

— DELI & ICE CREAM SHOPPE —

milkshake, rattle and roll!



Trolley Car Cafe

— AT THE BATHEY, EAST FALLS —

JOIN US AT THE TROLLEY

7619 GERMANTOWN AVENUE, PHILADELPHIA, PA 19119

Monday-Thursday 7am to 9pm | Friday & Saturday 7am to 10pm | Sunday 8am to 9pm

Must present **CENTRAL** voucher for the school to receive 20% of you purchase

December – Central Restaurant Week

Monday, December 4th thru Sunday, December 10th

More information available at www.centralhsa.org



WELCOME TO THE 2017 – 2018 SCHOOL YEAR

Welcome to the Central Home and School
Association Website. If you have a student at the

www.centralhsa.org

NEW WEBSITE FOR CENTRAL HOME & SCHOOL

277 Update

Class Rep:
Deb Holland

Class Sponsor:
Dr. Drago

- **Claire Gourmet Fundraiser**
 - Money & Forms due 11/16/2017
 - Defrays costs of class dues and prom for those who participate
- **Class Dues Collection**
 - Starts next week in homeroom (cash, check or money order)
 - With student's name; ID#; Book # & 277 class dues
- **Super Pan Photo: 11/15** with rain date 11/16
- **Flag football game 277 vs 278:11/16** after school
- **Central Thon Activities:**
 - Book Drive ends 11/16 new or gently used books
 - Toy Drive begins end of November
 - Both efforts benefit CHOP
 - Donate in room 302

277 Update (continued)

Class Rep:
Deb Holland

Class Sponsor:
Dr. Drago

- **Community Service Hour and Essay**
 - Due April 16,2018: *essay topic has not been chosen yet*
 - Submit community service paper with your homeroom number on it to Dr. Drago in room 320 (*not to room 211 or to him in class or in the hallway*). **SUBMIT TO ROOM 320!**
- **Cardigans**
 - final call deadline is Dec.1, 2017 for money and form
 - Can pay online or to Dr. Drago or Mr. Innamarato in room 204
 - Google form must be completed available on student's 277 google class page
 - Will receive cardigan by Winter Break
 - Cardigans ordered earlier will be in by Thanksgiving
- **HOMECOMING CHAPERONES NEEDED FOR FRIDAY NOV.17,2017 DANCE AT THE INN AT PENN**
 - if interested email Dr. Drago at edrago@philasd.org
- **277 Parents wish to congratulate the Public League and District Champions – GO LANCERS!!!!**

278 Update

Class Rep:
Jenny Yu

Class Sponsor:
Mr. Horwits

279 Update

Class Rep:
Kier Gray

Class Sponsor:
Ms. Zesserman

Entertainment Book

fundraiser has ended; another dues fundraiser opportunity will be available in December

Ice Skating

trip on December 8 (half-day for students), tickets are \$15 each, sales will likely start November 20

Barnes and Noble Book Fair

December 15-17, percentage of sales benefit Central High School, buy holiday gifts! Also a community service opportunity for 279, more info to come.

279 hats (\$20) and t-shirts

(\$15 short-sleeve, \$20 long-sleeve) are available from Ms. Zeserman during homeroom

Upcoming Events

Upcoming Events

| Event | Date | Time |
|------------------------------|------------------|--------------|
| Report Card Conferences | Tuesday, 11/ 21 | 12:30-3:00pm |
| | | 5:00 -7:00pm |
| Report Card Conferences | Wednesday, 11/22 | 12:30-3:00pm |
| December HSA Meeting POTLUCK | Wednesday, 12/13 | 6:30-8:00pm |

Next CHS HSA General Meeting

Wednesday, December 13, 2017
6:30pm in Spain Conference Room

IB Program Presentation & Potluck

**Thank you and
Happy Thanksgiving to all!**



This Photo by Unknown Author is licensed under [CC BY-NC-SA](https://creativecommons.org/licenses/by-nc-sa/4.0/)